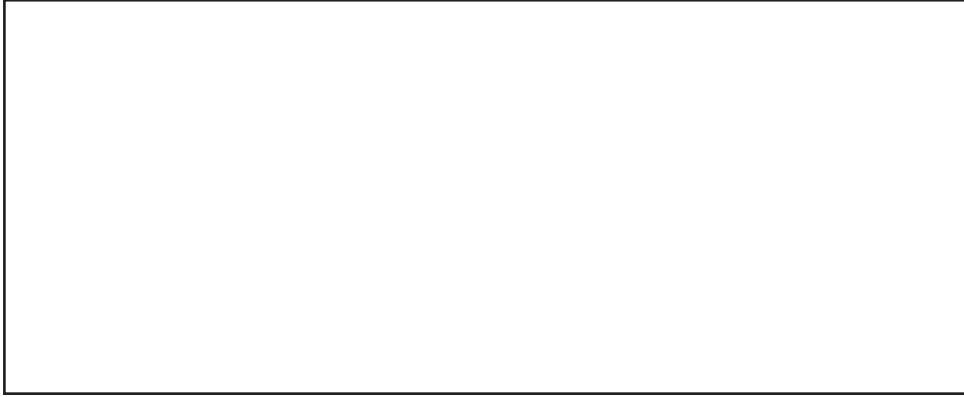


Graph

The wide smooth frequency response, good sensitivity and high power handling make the I 2.40 suitable for use in any quality installation



Specifications

Power Handling:		80 Watts satellite (max. music)	
		50 Watts full range (max. music)	
Nominal Impedance:		4 Ohm	
Frequency Response:		80-25.000 Hz	
Sensitivity (2.83V/1m):		89 dB	
Unit Size	ø -100 mm (4")	Qms:	4.98
Voice coil		Qes:	1.26
Woofer	ø - 54 mm (2 1/4")	Q/Ts:	1.00
Tweeter	ø - 28 mm (1 1/8")	VAS:	1.21 lt
		Cms:	443 µM/N
Resonant Frequency:	125 Hz	Moving Mass (ms):	3.66 gr
Dc Resistance:	3.40 Ohm		
Voice Coil Inductance @ 1Khz	0.22 mH	Magnet System:	Triple magnet
Air Gap Height:	4 mm	Cone Material:	DPC
X-Max Linear Excursion:	± 2 mm	Dome Material:	Soft Fabric
Force Factor (BXL)	2.79 tm	Nett Weight (per piece):	0.5 Kg



MACROM LTD.
3 Moree St., 6850 MENDRISIO
SWITZERLAND

MACROM® is Registered Trade Mark of Macrom Ltd. Dublin Ireland



I 2.40

Installation Guide

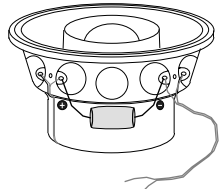
Illustrated Options for Specific & Standard Installation



Use of Bi-wiring

The Integra are prepared for bi-wiring connection. This allows you to separate the Tweeter from the Woofer using external crossover. Active or passive crossovers can be used according to requirements. The unit is supplied with a passive 6dB/Oct filter thanks to the perfect woofer roll off. For correct use of Bi-wiring please proceed as follows:

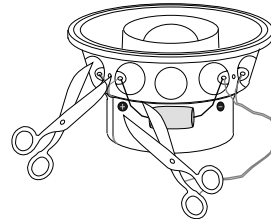
Instruction for use



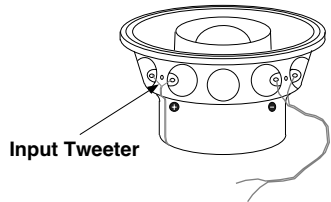
Input Integra

Standard 2 way system connection

Connect the terminals marked INPUT INTEGRA directly to the amplifier.



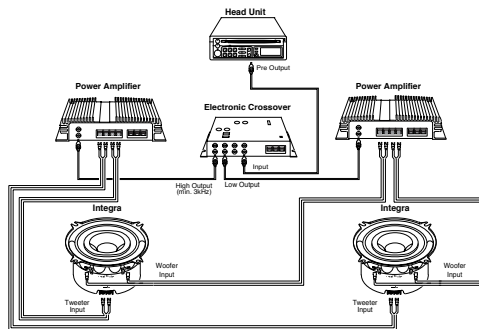
Cut the two Tweeter cables coming from the Magnet cover



Input Tweeter

Input Woofer

Example of Bi-wiring connection with electronic crossover



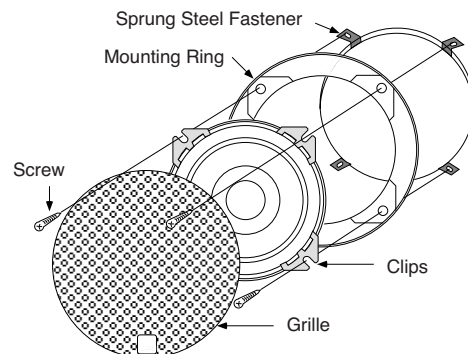
TWEETER WARNING: The tweeter CANNOT reproduce the whole audio range. You must absolutely use a passive or electronic crossover with a frequency cutting not lower than 3kHz.

Standard installation with grille kits

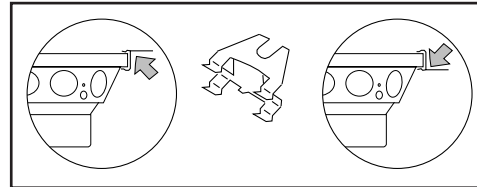
Versatile unit suitable for replacing car manufacturers' existing speaker installation or as a new component with grille kits protection.

Use the supplied accessories in to grille kit (fasteners, clips, screw, plastic frame and grille) according to the desired installation position.

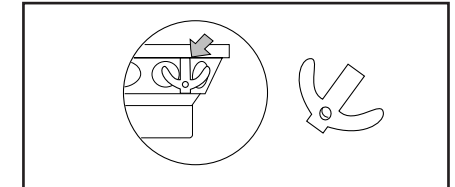
Any number and combination of fixings can be used to ensure satisfactory installation. Where necessary use the plastic frame as a template.



Substitute Installation

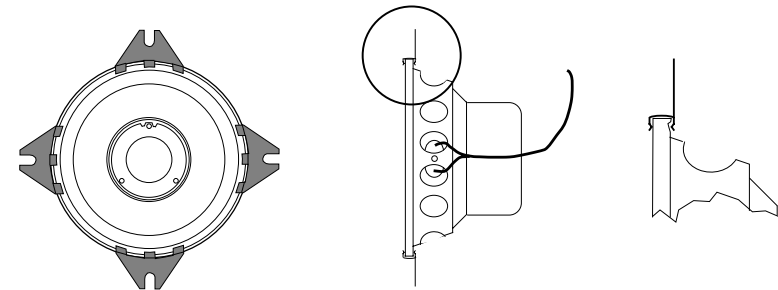


Use the screw clips in any combination, with or without the plastic frame. These clips can be used either way up depending on installation requirements.

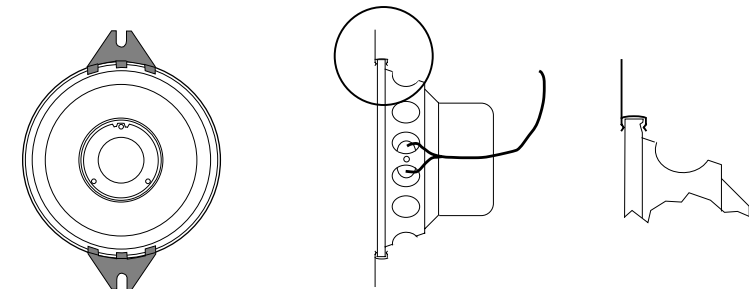


Use the non-screw clips to install the woofer in the dashboard or other locations which do not require screws. Insert the clips in the small holes on the side of the woofer according to your requirements.

Installation system for FIAT car's



Installation system for AUDI, TOYOTA car's



Installation system for MERCEDES, VOLKSWAGEN car's

